



# NEWSLETTER

WHEELING HISTORICAL SOCIETY

MAY 8, 2007



## Message From The President

Dear Members and Friends:

Well, here we are in the month of May when the planting needs to be done and to look forward to summer with all the wonders of nature blooming around us. What a wonderful time of the year.

As you know, this is the time when new officers will be installed on the board and the election of officers was held at the April 15th meeting. The choice of the members present are as follows: Vice President-Joan Wiener, Secretary- Charles Vallas, Treasurer- Marilyn Chromy, and Director- Bill Simpson. Along with that is our President Elaine Simpson, and two Directors, Barb LaHay and Wedge Hancock. Its great that we have three men on the board now. We are looking forward to our installation dinner at Chevy Chase on May 23<sup>rd</sup>. Wish you all could attend. .

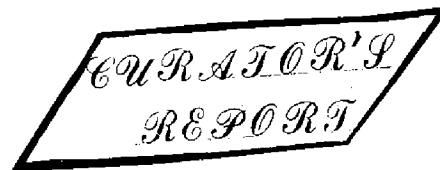
Also at the last meeting Charles showed a program on the Western Suburbs as presented by Channel 11. It was quite interesting with a look back in the 50's.

Its time again for all you active members to give a little of your time and sit at the museum on Sundays from 2-4 p.m. Please sign up with Linda or Patti. A new exhibit of local artists and crafts done by our residents is on display and an exhibit on the Civil War is in the plans. For those of you who have not been at the museum of late, come as see what's going on.

We are also in need of new active members, so if you know anyone interested in the history of our community, please ask them to join us.

There will be no meeting in May because of the dinner. Hope to see you there.

Elaine Simpson, President



I have located Superior Products Distributors, Inc. Windsor, Conn. in connections with the Superior Equipment Division in Wheeling. They have been in business for 37 plus years and sold equipment through Ace Hardware. This information will be sent on to Gene Patrick so he can research his old farm tractor loader made by Superior Equipment Division..

A wooden Montgomery Ward sled was cleaned and the metal parts sanded and repainted and is back at the museum ...thanks to Wedge for doing a great job.

Arts and Crafts by local artists is exhibited and on display. We have several different artists who have donated or loaned their art work and the work is distributed throughout the museum

The wooden handicap ramp has been finished so it can be used by any resident who needs it. Much thanks to the maintenance department of the park district.

2<sup>rd</sup> and 3<sup>rd</sup> grade classes from Tarkington School will be having a field trip to the museum on May 24<sup>th</sup> between 9 and Noon. Anyone interested in helping, please let me know.

## CARE TIPS:

To help you preserve, and care for your antiques and collectibles.

When drawers on old furniture stick, coat the runners with wax- not soap.

If the batteries inside an old toy have corroded, remove them and rub an emery board of the contact points. Install new batteries to make it operate.

NEVER use a dishwasher to clean painted wooden handles on your collectible kitchen utensils.

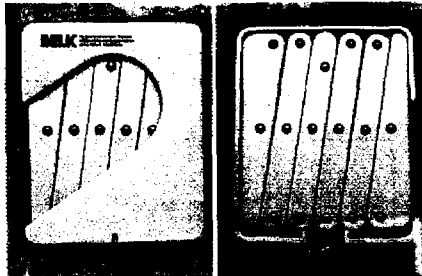
DO NOT store vinyl dolls in the attic. The heat will darken the vinyl and make it brittle.

Use denture cleaner to remove buildup inside old glass bottles.

Wash silver pieces immediately after using them with eggs, brussel sprouts, mustard, mayonnaise, vinegar or salt. These all contain sulfur which can tarnish the silver.

NEVER use a cut glass bowl to serve HOT items. This may cause cracking.

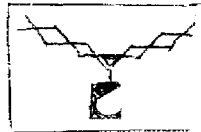
## WHATZIT



This item comes from a travel supply store. It is shown closed, from two different sides, in these two views. What does it become when it is "uncollapsed?"

ANSWER:

NEGNVH  
A CLOTHES



## EVER WONDER WHY????

How do those dead bugs get into closed light fixtures?

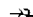
Why do we wash BATH towels? Aren't we clean when we use them? If not, then what was the purpose of the bath?

Considering all the lint you get in your dryer, if you kept drying your clothes would they eventually just disappear?

When we are in the supermarket and someone rams our ankle with a shopping cart then apologizes for doing so, why do we say "Its all right!" It isn't all right, so why don't we say "That hurt, you stupid idiot?"

## SHORT AND FUNNY

I dialed a number and got the following recording:

"I am not available right now, but Thank you for caring enough to call. I am making some changes in my life. Please leave a message after the beep. If I do not return your call, You are one of the changes." 

## THE YEAR IS 1906! What a difference a Century makes!

Crossword puzzles, canned beer, and ice tea hadn't been invented yet.

There was no Mother's Day or Father's Day.

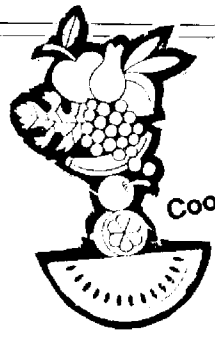
Two out of every 10 U.S. adults couldn't read or write.

Only 6 percent of all Americans had graduated from high school.

Eighteen percent of households in the U.S. had at least one full-time servant or domestic help.

There were about 230 reported murders in the entire U.S.A.!

Try to imagine what it may be like in another 100 years.



Cooks Kitchen

### Wyoming Whopper Cookies

(pictured above)

- 2/3 cup butter or margarine
- 1-1/4 cups packed brown sugar
- 3/4 cup sugar
- 3 eggs, beaten
- 1-1/2 cups chunky-style peanut butter\*
- 6 cups old-fashioned oats (not quick-cooking)
- 2 teaspoons baking soda
- 1-1/2 cups raisins
- 2 cups (12 ounces) semisweet chocolate chips



### Poet's Corner The House Where the Grass Doesn't Grow

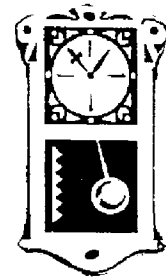
'Tis the only place in the trim little row  
Where somehow the grass refuses to grow.  
All the children play there, the one place they could  
In the whole of that fine little neighborhood.

The woman who lives there likes grass and is neat  
As the other women who live on this street.  
But she gladly endures the bare hallowed ground  
For the sake of having the children around.

And so when I walk by the prim little row  
I pause by the house where the grass doesn't grow  
Just to breathe a blessing on her as I pass.  
Who loves little children far better than grass.

—Author Unknown

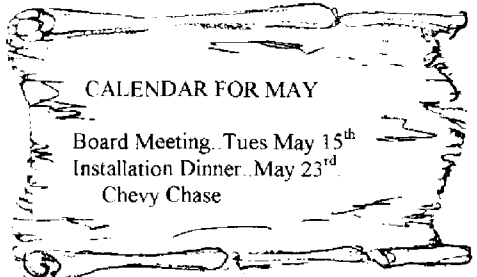
In a large saucepan, melt butter over low heat. Blend in sugars, eggs and peanut butter; mix until smooth. Add oats, baking soda, raisins and chocolate chips (dough will be sticky). Drop on a greased baking sheet with an ice cream scoop or large spoon. Flatten slightly. Bake at 350° for about 15 minutes. Remove cookies to a wire rack to cool. **Yield:** 2 dozen. **\*Editor's Note:** Jamie uses Jif brand peanut butter. If unavailable, use another brand, but add several tablespoons of water to the mixture.



### TIME MARCHES ON..

JUST A REMINDER THAT  
DUES FOR 2007-2008 ARE  
DUE IN MAY.

You can pay at the Installation  
Dinner or mail your dues in with  
the enclosed renewal application.



### CALENDAR FOR MAY

Board Meeting, Tues May 15<sup>th</sup>  
Installation Dinner, May 23<sup>rd</sup>  
Chevy Chase

### MEMBERSHIP APPLICATION

NAME \_\_\_\_\_

ADDRESS \_\_\_\_\_

CITY, STATE \_\_\_\_\_

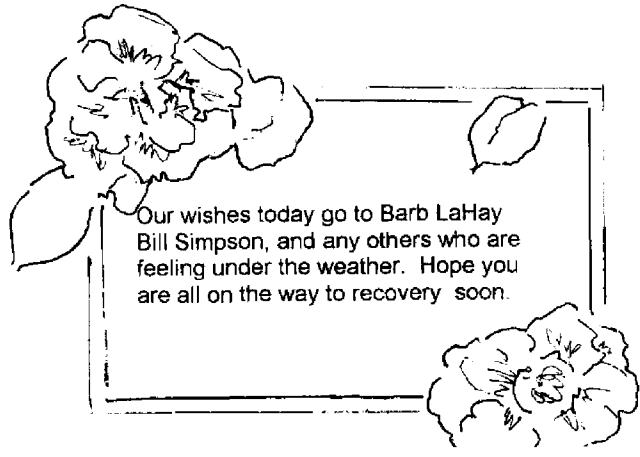
PHONE \_\_\_\_\_ ZIP \_\_\_\_\_

### CHECK ONE:

\_\_\_\_\_ FAMILY MEMBERSHIP \$15.00

\_\_\_\_\_ INDIVIDUAL MEMBERSHIP \$10.00

Checks are made payable to:  
Wheeling Historical Society  
P.O. Box 3  
Wheeling, IL 60090



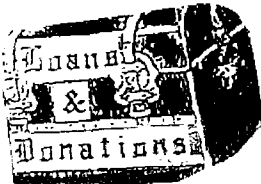
Our wishes today go to Barb LaHay  
Bill Simpson, and any others who are  
feeling under the weather. Hope you  
are all on the way to recovery soon.

Our pending exhibit is a Civil War display. We have collected some artifacts and names of our local soldiers who served in the Civil War. Anyone with info, let me know.

Caren Green is doing an article on Wheeling for the North Shore Magazine. She will be using some pictures taken from the Diamond Jubilee book and giving the Society credits. The article is due out in June.

We have received a call from Bernette Shellier of St. Charles requesting information on an old Wheeling dump location. Anyone know ????

Linda Reading, Curator



We would like to thank the following friends for their donations to the museum.

Wheeling Historical Society- 15 pictures of various locations and homes in Wheeling. 1 pink tatted hankerchief, button book and a package of old buttons, 5 postcards (Lincoln's home) 1 brochure "Prairie Park - Wheeling"

Village of Wheeling- Letter received from old bank bldg. When it was located at 4 S. Milwaukee Ave.

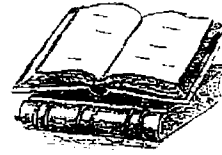
Don Malin Jr.- A picture of Wheeling II. 1973 Fire Department Firemen.

Gerald Wienckowski- A picture of Community Consolidated School Dist. #21 Class of 1960.

ITS #@\$%# TO GET OLD

Of course I'm against sin; I'm against anything that I'm too old to enjoy.

A man has reached middle age when he is cautioned to slow down by his doctor instead of by the police.



## A Bit of History

MORE GROWTH IN WHEELING'S FUTURE

BY Anne Slavicek

August 14, 1969

Continued.....

**A sidelight** to the discussion on transportation and Accessibility is the elf-contained units which seem to evolve in some areas of the village. Even new residents of Wheeling soon learn to say "I live in "Dunhurst" or "Meadowbrook" or "the old part of town."

While some might worry that such sectionalism x might divide the village into factions and keep Wheeling from becoming a cohesive town, Lace disagrees.

He notes that planners find nothing wrong with having names of sections within a community because it gives a sense of identification and group integrity to those who belong. Lace says that professional planners compare the clannishness found in modern subdivisions to the ethnic colonies which formed in Chicago. Like Rogers Park, Uptown, or Andersonville, the subdivision names will endure for several generations after the development is complete, lace believes.

Transportation is also important in overcoming the sectionalism caused by the railroad tracks and strip of industry which divide the village's west and east halves.

More roads crossing the tracks to connect the town's residential sections are a goal for the village board.

Continued.....